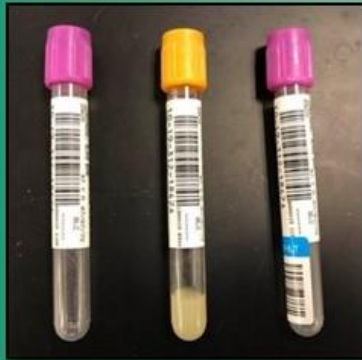
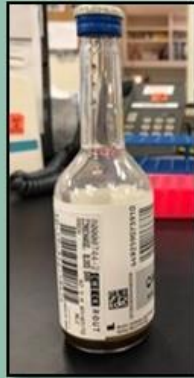


Proper placement of specimen barcode labels is **important.**



Top to bottom



Left to right

Laboratory analyzers cannot readily accept the barcodes on these containers



When the specimens shown here arrive in the lab they must be re-labeled before they can be put on an analyzer.



Avoid affixing labels:

- Horizontally
- Diagonally
- Off the edge of tube